

**Document No.:** RN-210115-01  
**Date:** January 11, 2021  
**Classification:** External  
**Attn:** All customers  
**Related Products:** C700  
**Subject:** C700 Software Release Note (ver. 1.1.4)

## Dear Valued Customers,

Intellian is pleased to release updated software for the Intellian Iridium Certus terminal, C700. Please apply the firmware update to the models in Table 1.

It is recommended to apply this change at next service call or visit on board.

**Table 1 Software Versions**

No.	Model Name	Part Number	Previous Version	Release Version
1	C700	C1-70-A00R C1-70-A00S	1.0.2	1.1.4

See Table 2 for list of new functions, improvements, and bug fixes. See Table 3 for the Software details and the dedicated download links.

**Table 2 Summary of Changes**

Category	Contents	Applied Software		Comments
		ADU	BDU	
New Function	Data Limits feature added	-	O	See section 1.1
Improvement	Tooltips on the menu in AptusLX	-	O	See section 2.1
	View of the user manual in AptusLX	-	O	See section 2.2
Bug Fixes	Firewall abnormality when the rule is set with Domain condition.	-	O	See section 3.1

**Table 3 Software Details**

Product	File name	Version	
C700	<a href="#">Certus700_v1.1.4-20201224.bin</a>	Package S/W	1.1.4
		ADU S/W	1.0.1
		BCX S/W	2.4.5-13243

## 1 New Function

1.1 The function which restrict the data usage and alert the excess of data limit has been added.

- Daily data limits, Monthly data limits for postpaid and SDF 1~SDF 4
- Display satellite data usage in Dashboard
- Alert message when the data usage exceeds the data limits

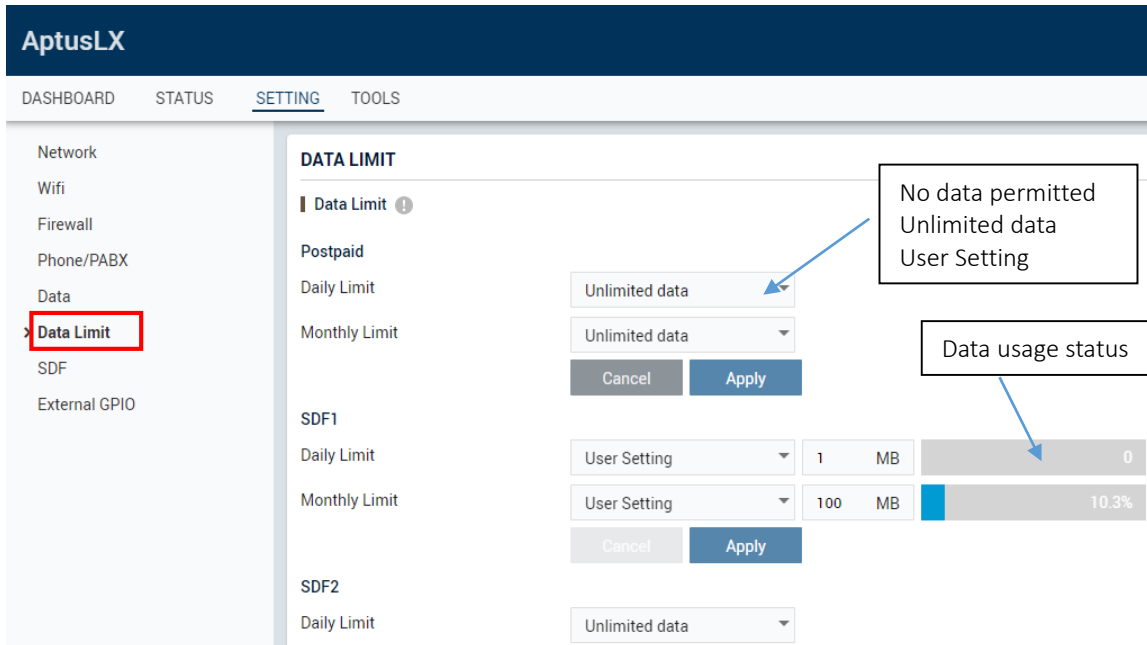


Figure 1 Data Limits & Data Usage monitoring

## 2 Improvement

2.1 Tooltips has been displayed to understand items well if moving the mouse over a “exclamation mark” of each item

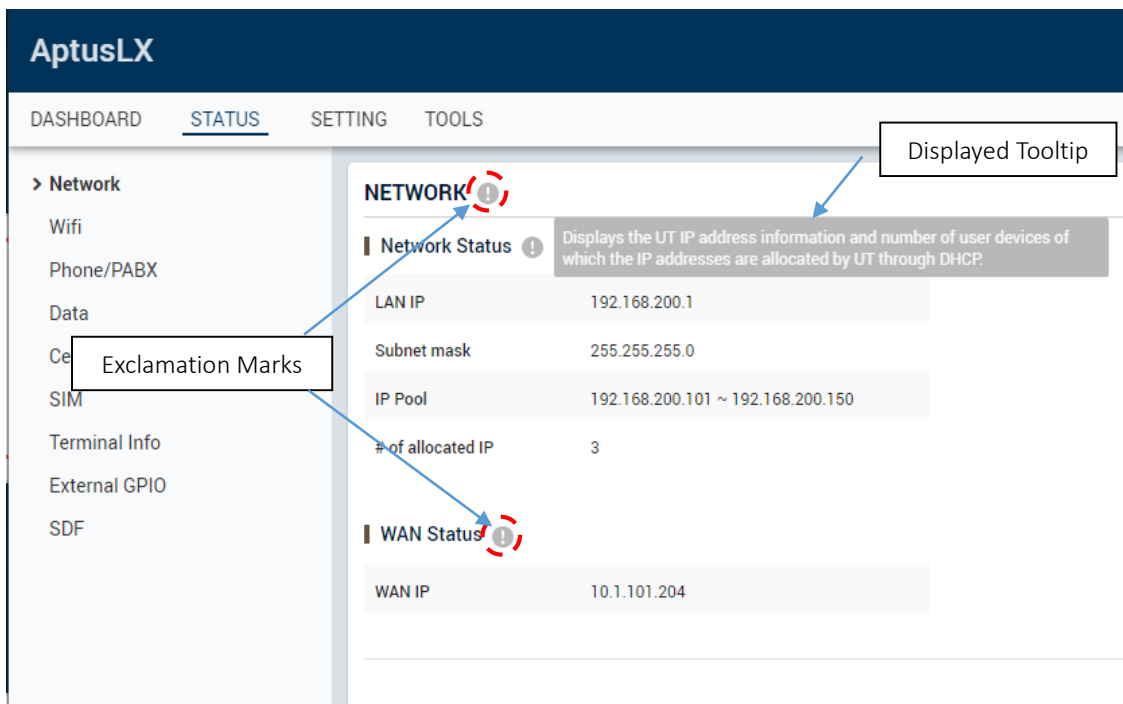
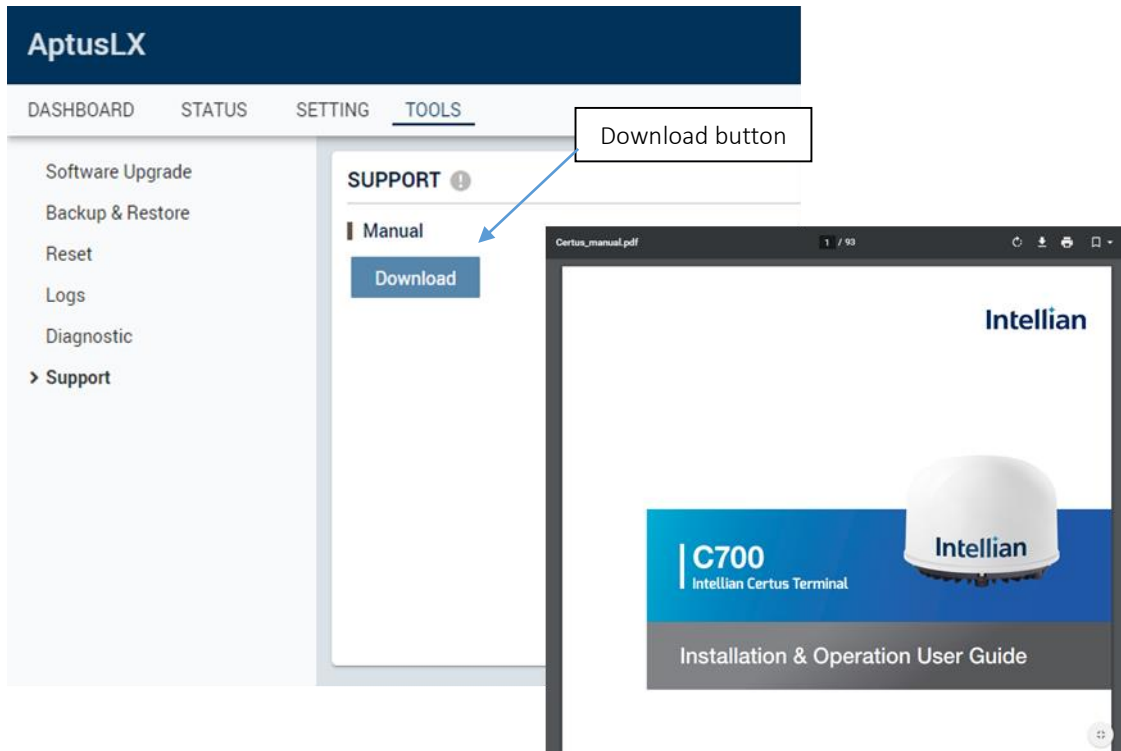


Figure 2 Tooltips in the menu

2.2 The Installation & Operation User Guide is embedded in AptusLX from factory and do not require the terminal to be on-line to open the document.

- The PDF file will open in a new webpage when clicking on the download button.



**Figure 3 Installation & Operation User Guide in AptusLX**

### 3 Bug Fixes

3.1 In the case that a firewall rule was set with “Domain”, the firewall wasn’t working normally if the IP address of the domain was changed. This issue has been resolved as modify to get the same IP for DNS requests.

## Contact Information

Please contact your regional Product Management team if you have any questions or require any additional information.

Thank you.

Product Management Team

## Regional Product Managers

US: Jim Hatcher / Senior Director Product Management

[Jim.Hatcher@intelliantech.com](mailto:Jim.Hatcher@intelliantech.com)

EMEA: Troels Christensen / Product Manager

[Troels.Christensen@intelliantech.com](mailto:Troels.Christensen@intelliantech.com)

APAC: DJ Kang / Senior Product Manager

[Dj.Kang@intelliantech.com](mailto:Dj.Kang@intelliantech.com)

### H.Q.

Pangyo Office

Intellian Technologies, Inc.  
5F IDIS Tower, 344, Pangyo-ro  
Bundang-gu, Seongnam-si,  
Gyeonggi-do, 17709 Korea

T +82 2 511 2244

F +82 2 511 2235

[Support@intelliantech.com](mailto:Support@intelliantech.com)

### EMEA

Rotterdam Office

Intellian B.V.  
Sheffieldstraat 7, 3047AN  
Rotterdam,  
The Netherlands

T +31 1 0820 8655

F +31 1 0820 8656

[Support@intelliantech.com](mailto:Support@intelliantech.com)

### AMERICAS

Irvine Office

Intellian Technologies USA, Inc.  
11 Studebaker  
Irvine, CA 92618 U.S.A.

T +1 949 727 4498

F +1 949 271 4183

[Support@intelliantech.com](mailto:Support@intelliantech.com)